

Annual Report

Mo-Kan

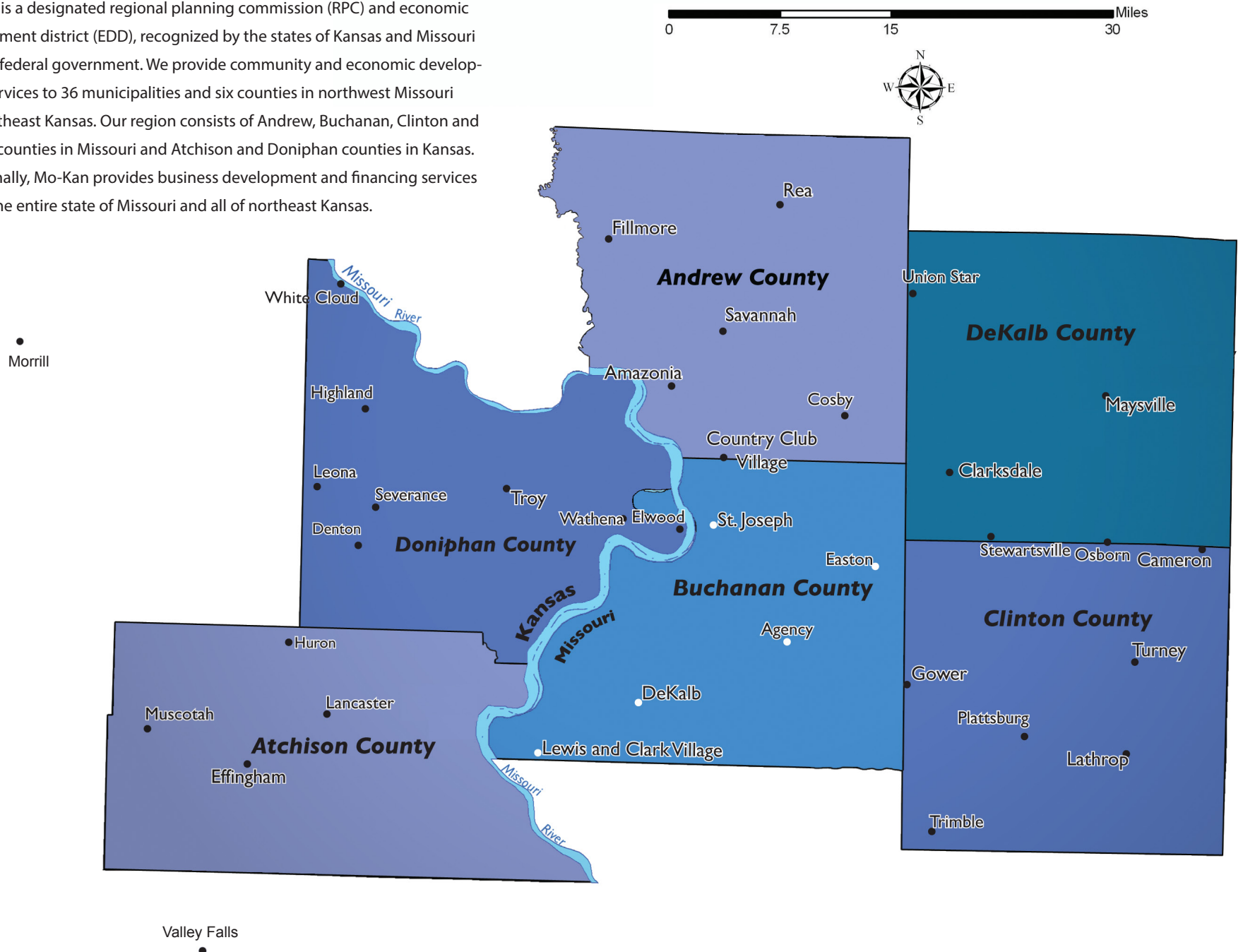
An Economic & Community Development Organization

FY 2022

Economic & Community
Development Organization

Mo-Kan Service Area

Mo-Kan is a designated regional planning commission (RPC) and economic development district (EDD), recognized by the states of Kansas and Missouri and the federal government. We provide community and economic development services to 36 municipalities and six counties in northwest Missouri and northeast Kansas. Our region consists of Andrew, Buchanan, Clinton and DeKalb counties in Missouri and Atchison and Doniphan counties in Kansas. Additionally, Mo-Kan provides business development and financing services across the entire state of Missouri and all of northeast Kansas.



Mo-Kan Regional Council is an economic and community development organization serving county and municipal governments in four Missouri counties, two Kansas counties and two municipalities in non-member Kansas counties. Specifically, Mo-Kan serves Andrew, Buchanan, Clinton, and DeKalb counties in Missouri; Atchison and Doniphan counties in Kansas; the City of Morrill in Brown County, Kansas, and the City of Valley Falls in Nemaha County, Kansas.

The concept of a regional council stemmed from the need to pool area resources for the purpose of securing professional services for counties and municipalities. One such service lacking at the time was planning services for land use and zoning. Legislation providing for this pooling of effort was enacted in Kansas and Missouri in the 1950s and 60s. In 1957, Kansas authorized County Zoning and Planning Commissions, which could either employ a zoning officer or, in the less populous counties, contract for counseling services. In 1966, Missouri designated 20 areas permitted to pool planning resources.

Included in the Missouri pooling zone were Andrew, Buchanan, Clinton and DeKalb (ABCD) counties. The ABCD Regional Planning Commission was chartered in February 1968. In June 1968, the Doniphan County, Kansas Planning and Zoning Commission sought membership with the Missouri Commission to create synergy in the outlying St. Joseph metropolitan area.

Consequently, permission was granted to create the Mo-Kan Bi-State Planning Commission, whose name changed five years later to the entity now known as the Mo-Kan Regional Council (MKRC). Immediately

seeing the value in the regional planning commission, the city of Atchison sought and was granted membership in November 1968. Kansas membership increased with the addition of Atchison County and the city of Horton in 1974. In 1984, the cities of Hiawatha and Morrill also elected to join. Over the course of time, member government's developed a wider range of needs beyond long-range planning. The organization began providing services such as grant procurement and administration, offset printing and cartography, and has continued to broaden its scope of services over the years.

Mo-Kan Regional Council Annual Report FY 2022



The voting membership of the Mo-Kan Regional Council consists of 32 persons, 16 each from Missouri and Kansas. Kansas members are named directly to the council by Doniphan and Atchison counties and the municipalities of Atchison and Morrill. Missouri members are first named by the counties and municipalities to the ABCD Regional Planning Commission. This group then holds a caucus by county to name the 16 who will be the Mo-Kan Council voting members from Missouri. The council and the commission meet simultaneously each month to transact Council business.

Comprehensive Economic Development Strategy (CEDS)

Copies of Mo-Kan's most recent CEDS are available at the offices of MKRC and online at <https://www.mo-kan.org/community/comprehensive-economic-development-strategy-plan/>.



Mo-Kan solicited input from stakeholders in all six member counties.

Mo-Kan Regional Council is required by the Economic Development Administration (EDA) to facilitate the completion of a regional Comprehensive Economic Development Strategy (CEDS). The EDA may then provide grants (EDA funds) to local and multi-jurisdictional entities that support the implementation of the goals identified in the CEDS. For instance, if the region determines bio-science or bio-fuels are important then EDA may provide grant dollars for future bio-science projects.

Mo-Kan Regional Council (MKRC), organized as an Economic Development District (EDD) by policies set forth by the United States Department of Commerce and Kansas and Missouri State Statutes, receives an annu-

al planning grant from EDA. MKRC matches the federal planning grant with local funds provided by area governments. The EDD planning grant not only allows Mo-Kan to devise and implement the goals set forth in the CEDS, but also provides the financial resources that allow MKRC to furnish an array of technical assistance to public and private entities within the region.

The 2020 CEDS identified the following four goals:

1. Grow prosperity focusing on infrastructure, communication, government and community collaboration to develop sustainable community services
2. Create a better place by connecting neighborhoods with business services and amenities, cultivating entrepreneurship and providing financial services for small business development
3. Provide technical assistance for community and economic planning to improve quality of life through better transportation, recreation, and environmental safeguards
4. Invest in people through workforce development and education to align employment opportunities with qualified employees to achieve synchronized business growth



Community Assistance

- Planning
- Grant Research and Writing
- Downtown Revitalization
- Historic Preservation
- Economic Development
- Homeland Security
- GIS/Mapping
- Regional Advocacy

Local Government Services

Since its inception in 1968, Mo-Kan Regional Council has provided its member communities with an array of professional services. Through planning, program coordination, advocacy and technical assistance, Mo-Kan staff strives to make the region and its communities a better place to live and work. Mo-Kan serves its member communities by providing a forum for regional collaboration and progression. Through this regional partner-

ship, community representatives can come together to tackle common obstacles and reach common goals. Much of Mo-Kan's efforts continue to focus on the preparation and management of member communities' grant programs. This responsibility is becoming increasingly difficult as the climate in Washington, Topeka and Jefferson City have shifted to cutting programs that directly impact local community and economic development ef-

forts; however, these circumstances have made Mo-Kan's role more critical for our member communities. Mo-Kan continues to work for local governments in 2013 through a variety of efforts, including the NADO Innovation award-winning Better Block St. Joseph project, conducting a regional GIS/land-use workshop, and presenting at a regional business summit, as well as several other community and economic development projects.



In previous years, Mo-Kan helped facilitate the Region H Safe Schools Working Group, a northwest Missouri initiative that addresses potential hazards to schools in a 15-county area, and the Ag Task Force to assess the region's agricultural needs. Mo-Kan continues to assist in regional planning. In 2013, a subcommittee of the RHSOC and other stakeholders from the region met to discuss scenarios for natural, man-made, and technological disasters. The process culminated in Region H's first regional Threat and Hazard Identification and Risk Assessment (THIRA).

Since 2012, Mo-Kan has also promoted the StormReady Communities program. Nine counties and communities in Region H are now StormReady certified. More information on the process is available at www.mo-kan.org/stormready. Mo-Kan also continues to curate the Region's Outdoor Warning Siren protocol, available at www.mo-kan.org/ows.



Homeland Security

Mo-Kan facilitates the Region H Homeland Security Oversight Committee. For more information, visit www.missouriregionh.com.

In 2022, Mo-Kan Regional Council completed its fifteenth year as the lead Regional Planning Commission for the Region H Home-land Security Oversight Committee (RHSOC). Mo-Kan, with the Missouri Office of Homeland Security (OHS), is responsible for event coordination, administration, fiscal operations, professional development, community outreach and publicity for the RHSOC. The 32-member, 16-discipline Region H Homeland Oversight Committee meets on a quarterly basis, and is charged with the task of planning regional response to acts of terrorism, natural disasters, as well as allocating State Homeland Security Grant Program funds.

For additional information on Mo-Kan's Transportation Planning Services and the TAC, please visit www.mo-kan.org. Copies of Mo-Kan's Regional Transportation Plan and Work Plan are available at the offices of MKRC.



Transportation Planning

Since 1996, Mo-Kan has partnered with the Missouri Department of Transportation (MoDOT) to identify and prioritize the region's transportation needs through the Transportation Advisory Committee (TAC). It is the TAC's primary responsibility to serve as the public conduit in the planning process, which ultimately shapes the Statewide Transportation Improvement Plan (STIP). Mo-Kan also works with MoDOT and the TAC to develop and expand on the Regional Transportation Plan (RTP). Since 2012, the TAC has been tasked with new responsibilities, such as selecting Road Safety Assessment (RSA) locations and scoring regional Blueprint for Safety Grant funds. As the TAC's role expands, Mo-Kan aims to strengthen the lines of communication between MoDOT, local officials and

the public to help ensure a superior regional transportation network. This goal is also being reached through stronger statewide relationships established through the Missouri Association of Councils of Government (MACOG).

Beyond the coordination of the TAC process, Mo-Kan Regional Council also provides an array of other services to assist our Missouri and Kansas member communities address their transportation needs. Mo-Kan staff continues to conduct Road Safety Assessments and assist communities plans for new road and bridge projects. In 2012 Mo-Kan acquired a speed radar trailer as a new resource for member communities. The unit deters speeding by displaying vehicle speeds as drivers pass by, while also collecting and analyzing valuable traffic data.



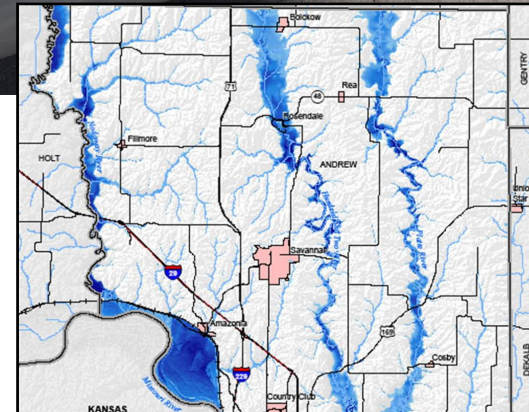
GIS and Mapping Services

Mo-Kan provides GIS services for businesses and its member communities, supplying them with mapping resources as needed. Staff can provide high quality maps using industry-standard ESRI ArcGIS 10 and Trimble GPS unit. Mo-Kan's large-format HP printer allows staff to print maps as large as 34" x 44" and scan existing maps as large as 36" wide. Additionally, Mo-Kan can laminate maps to ensure durability. Mo-Kan can build custom datasets and cartographic products to suit your needs. Technical assistance for your own geographic systems is also available.

For additional information, contact:

tyler@mo-kan.org or visit www.mo-kan.org.

www.mo-kan.org.





One particular area of focus is On-the-Job training. Through extensive cooperation between Career Center staff and area employers, and we are now working with one active OJT project and are actively working to cultivate more. From July 2021 to June 2022, over 15,000 customers visited the St. Joseph Missouri Career Center at 2202 Fredrick Avenue.

Workforce Development

For information about the Missouri Job Center please contact Tyler Ferrell at 816-233-3144 or tyler@mo-kan.org.

In 2010, the Northwest Missouri Workforce Investment Board (WIB) recognized Mo-Kan Regional Council's quality work and made the organization responsible for providing Adult and Dislocated Worker programs in Andrew, Buchanan, Clinton, and DeKalb counties.

The Career Center held multiple job fairs this year. All fairs were a success. The turnout of job seekers was phenomenal. We had employers from all job sectors. The employers at the career fair came from medical, production, hospitality, maintenance and customer service. From both career fairs; several job seekers left with a job or further interviews to obtain employment. This will be an ongoing event at the Career Center each year.

The staff works diligently to assist job seekers, offering services we have available, such as résumé writing, career exploration and networking, and interview techniques.





Hazard Mitigation

Natural hazards – such as tornadoes, snowstorms and drought – are likely to happen in the Mo-Kan region. Communities can take steps to minimize injuries and property damage.

Hazard mitigation planning is the process authorized by the Robert T. Stafford Disaster Relief and Emergency Assistance Act. Communities identify the hazards that present the greatest threats, assess their risks and vulnerabilities, then develop a strategy with goals to mitigate the potential effects.

In FY 2022 Mo-Kan worked with community leaders in Andrew and Clinton Counties to update their hazard mitigation plans.



Business Financing



“Financing your business is our business.”

Since 1982, Mo-Kan has partnered with the U.S. Small Business Administration to provide commercial loans to area businesses in an effort to strengthen our region's economy. Loan programs offered by Mo-Kan are designed to be an affordable means in which businesses can access much-needed capital.

Many of the entrepreneurs that Mo-Kan assists are in search of ways to preserve their cash on hand for working capital. Mo-Kan is able to fill the financing gap between what a local bank is able to provide and what the borrower has available for down payment. In many cases, the local lender provides 50 percent of the financing and Mo-Kan secures 30-40 percent of the project costs. All of Mo-Kan's loan products offer a fixed interest rate for the life of the loan. Fixed rates provide entrepreneurs assurance that their payments will not increase over time, which in turn helps them gauge future growth opportunities.

Mo-Kan's primary objective for these loan programs is to improve the area's economy through job creation. Local job creation directly increases net wealth in our communities. Along with the loan programs, Mo-Kan offers technical assistance to entrepreneurs needing aid in finalizing/analyzing their endeavors. Technical assistance is provided in many forms, ranging from financial analysis to something as simple as introducing the right contacts.

For more information about Mo-Kan's loan programs, please contact Tyler Ferrell (tyler@mo-kan.org) or call our office at 816-233-3144.





Andrew County

411 Court Street Savannah, MO 64485 816-324-3624

Amazonia

PO BOX 85

Amazonia, MO 64421

816-475-2281

Bolckow

PO BOX 47

Bolckow, MO 64427

816-428-2042

Cosby

PO BOX 46

Cosby, MO 64427

816-379-2221

[www.freewebs.com/](http://www.freewebs.com/cosbytowncouncil)

cosbytowncouncil

Country Club

6601 North Belt Hwy

St. Joseph, MO 64506

816-232-4621

www.villageofcountryclubmo.org

Fillmore

PO BOX 117

Fillmore, MO 64449

816-565-0792

Rea

PO BOX 56

Rea, MO 64480

816-526-3595

Rosendale

801 S US HWY 71

Rosendale, MO 64483

816-567-2200

Savannah

402 Court Street

Savannah, MO 64485

816-324-3315

www.savannahmo.net



Buchanan County

411 Jules Street St. Joseph, MO 64501 816-271-1411

Agency
PO BOX 34
Agency, MO 64401
816-253-9176

DeKalb
PO BOX 104
DeKalb, MO 64440
816-685-3273

Easton
PO BOX 75
Easton, MO 64443
816-473-4571

Lewis & Clark
400 Lake Crest Drive
Rushville, MO 64484
816-579-5737

Rushville
PO BOX 187
Rushville, MO 64484
816-688-7556

St. Joseph
1100 Frederick Ave
St. Joseph, MO 64501
816-271-4730
www.ci.st-joseph.mo.us







Clinton County

207 North Main Street Plattsburg, MO 64477 816-539-3713

Cameron
205 North Main
Cameron, MO 64429
816-632-2177
www.cameron-mo.com

Gower
97 North 4th Street
Gower, MO 64454
816-424-6617

Lathrop
707 Oak Street
Lathrop, MO 64465
816-740-4251
www.lathropmissouri.org

Plattsburg
114 Maple Street
Plattsburg, MO 64477
816-539-2148
www.plattsburg-mo.gov

Trimble
201 Port Arthur Avenue
Trimble, MO 64492
816-357-2397
www.trimblemo.org

Turney
PO BOX 63
Turney, MO 64493
816-664-2009



DeKalb County

PO Box 248 Maysville, MO 64469 816-449-5402

Amity
PO BOX 153
Amity, MO 64422
816-449-5607

Clarksdale
PO BOX 47
Clarksdale, MO 64430
816-393-5363

Maysville
PO BOX 470
Maysville, MO 64469
816-449-2185

Osborn
151 West Georgie Street
Osborn, MO 64474
816-675-2239

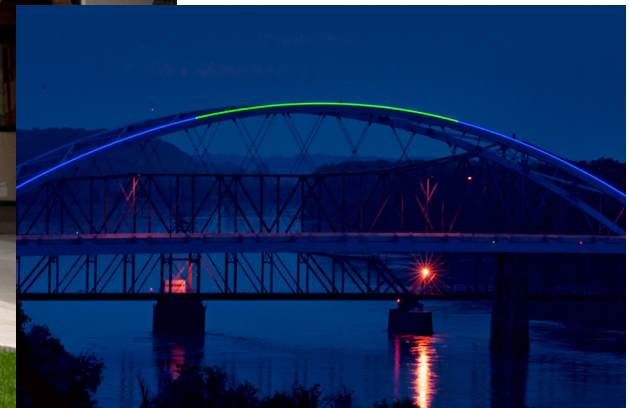
Weatherby
PO BOX 194
Weatherby, MO 64497
816-449-5422

Stewartsville
501 Main Street
Stewartsville, MO 64490
816-669-3278

Union Star
375 Cedar
Union Star, MO 64494
816-593-2533







Atchison County

423 North 5th Street Atchison, KS 66002 913-367-8245

Atchison
515 Kansas Avenue
Atchison, KS 66002
913-367-5500
www.cityofatchison.com

Effingham
PO BOX 94
Effingham, KS 66023
913-833-4471
www.thenewsleaf.com
effingham.htm

Huron
PO BOX 154
Lancaster, KS 66041
785-847-6818

Lancaster
PO BOX 146
Lancaster, KS 66041
913-255-2461

Muscotah
PO BOX 295
Muscotah, KS 66058
785-872-3585

Brown County

601 Oregon Street Hiawatha, KS 66434 785-742-2581

Morrill
PO Box 146
Morrill, KS 66515
785-459-2231



Doniphan County

PO Box 278 120 East Chestnut Troy, KS 66087 785-985-2665

Denton
PO BOX 202
Denton, KS 66017
785-359-6533

Elwood
207 North 6th Street
Elwood, KS 66024
913-365-6871
www.elwoodkansas.org

Highland
PO BOX 387
Highland, KS 66035
785-442-3765
www.highlandkansas.org

Leona
406 Maple
Leona, KS 66532
785-359-6608

Severance
308 Vine Street
Severance, KS 66087
785-359-6787

Troy
137 West Walnut
Troy, KS 66087
785-985-2101

Wathena
206 South Joseph
Wathena, KS 66090
785-9894711
www.cityofwathenakansas.org

White Cloud
PO BOX 23
White Cloud, KS 66094
785-595-6635







ADDRESS: 224 North 7th Street
St. Joseph, Missouri 64501
PHONE: 816-233-3144
FAX: 816-233-8498
WEBSITE: www.mo-kan.org

