

Mo-Kan Regional Council Sidewalk Assessment Program

Communities with population of 500 or more

Conducted Summer/Fall 2020



Mo-Kan Regional Council
224 N. 7th Street
St. Joseph, MO 64501
(816) 233-3144
www.mo-kan.org

Mo-Kan Regional Council Sidewalk Assessment

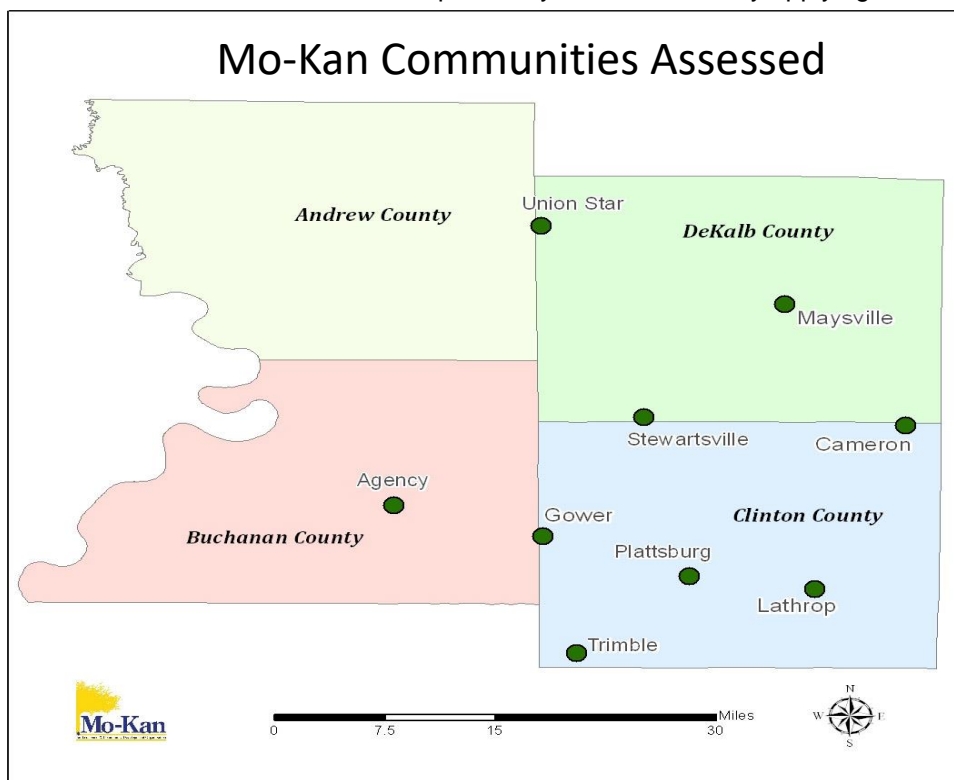
Background

During Fiscal Year 2010, Mo-Kan Regional Council, Northwest Missouri Regional Council of Governments, and Green Hills Regional Planning Commission agreed to begin a sidewalk assessment program for northwest Missouri. The regional planning commissions worked with the Missouri Department of Transportation (MoDOT) Northwest District (formerly known as District 1) to complete the assessment in two phases, Phase 1 and Phase 2. The purpose of the project was to collect general information about pedestrian infrastructure as well as to assess the existing sidewalk systems in northwest Missouri. Such information may be utilized for planning purposes, establishing local priorities, potential grant applications, participation in the Safe Routes to School program and the Transportation Enhancement program.

The first phase, completed during FY2010 and early FY2011, was a simple survey to identify existing sidewalks and assess the importance of sidewalks to each of the communities in Mo-Kan's four-county region.

During FY2011, the second phase began with the regional planning commissions agreeing to expand this survey to a more intensive assessment of sidewalk systems. Beginning in the spring of 2011, Mo-Kan employees utilized aerial photography and Google Earth to identify existing sidewalks in member communities served by Mo-Kan's Transportation Advisory Committee (TAC). With this information in-hand, member communities' sidewalks were then visually assessed and categorized based on its current condition.

Initially, the second phase of the project was to be limited to communities with populations over 1,000; however, member communities with populations over 500 (Agency, Stewartsville and Trimble) were also included due to the assessment team working ahead of schedule. Union Star (population 437) was also included in the assessment because the City was applying for funds to pay for sidewalk improvements. To help strengthen Union Star's application, the community was included in the second phase. The application was not submitted but Union Star's sidewalks continue to be evaluated since there is a possibility of the community applying for funds in the future.



Communities included in Phase 2

Sidewalks assessed in communities with populations over 1,000:

Cameron	Maysville
Gower	Plattsburg
Lathrop	

Sidewalks assessed in communities with populations between 500 and 1,000:

Agency	Trimble
Stewartsville	

Sidewalks assessed in communities considering applying for sidewalk grants with populations under 500:

Union Star

In 2014 the five communities with populations over 1,000 (Cameron, Gower, Lathrop, Maysville and Plattsburg) were assessed again, along with Stewartsville.

Sidewalk Assessments were not completed in 2015 due to staff changes so in the summer of 2016 all nine communities received sidewalk assessments. Union Star continues to be included in the assessment although the population was under 500. In 2017 the communities with populations between 500 and 1,000 were assessed and 2018 the communities with populations over 1,000 were assessed.

Assessment Methods:

After using aerial photography and Google Earth to identify existing sidewalks, Mo-Kan staff traveled to each community to collect condition information. Each sidewalk was visually assessed and categorized using the following criteria:

Good: Unlikely to hinder mobility of the average pedestrian. The sidewalk is free from significant cracking, buckling, gravel surfaces, or other debris which would impede pedestrian traffic.

Map key: Green

Fair: Uneven and distressed surface that hinders mobility of the average pedestrian. The sidewalk contains surface cracks, vegetation overgrowth, or debris.

Map key: Blue

Poor: Impassable to mobility impaired pedestrian; hinders mobility of average pedestrian. The sidewalk has deep cracking or buckling, significant vegetative overgrowth, poor

drainage, bulging surface (due to tree roots) and / or debris such that pedestrian travel would be impeded.

Map key: Red

Village of Agency

Sidewalks in the Village of Agency (*Census.gov* 2017 estimated population: 684) were surveyed in April 2017 by Mo-Kan Regional Council. The assessment identified approximately 1,518 linear feet (.29 miles) of sidewalk in Agency.

Sidewalk Conditions:

The table below presents the current state of Agency's sidewalks, based on observations made during the assessment.

Condition	Linear Feet	Percent of Total
Poor	719	47%
Fair	806	53%
Good	0	0%
Totals:	1,525	100%

In relation to communities within the region of comparable size, Agency is served by very few sidewalks. The sidewalks that do exist are largely in poor condition and are located on Main Street and SE State Route H in residential neighborhoods. In recent years, Agency has come to serve as a bedroom community to St. Joseph and Kansas City due to its proximity to Interstate 29. Therefore, the village has experienced substantial residential growth; however, public investments in sidewalk infrastructure have not accompanied this new development. This has been the case in other growing communities within the Mo-Kan region as well. State routes within Agency include State Highway H and State Highway FF, both of which are not currently served by sidewalks.



Fair Rating:

Main Street,
between Third and Fourth Streets

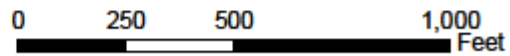
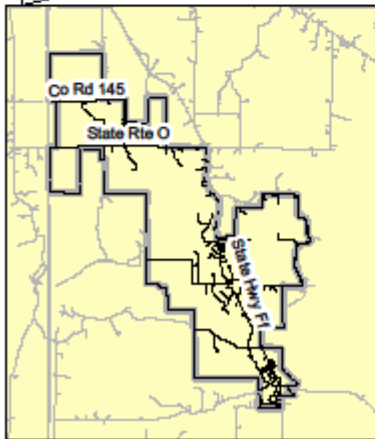
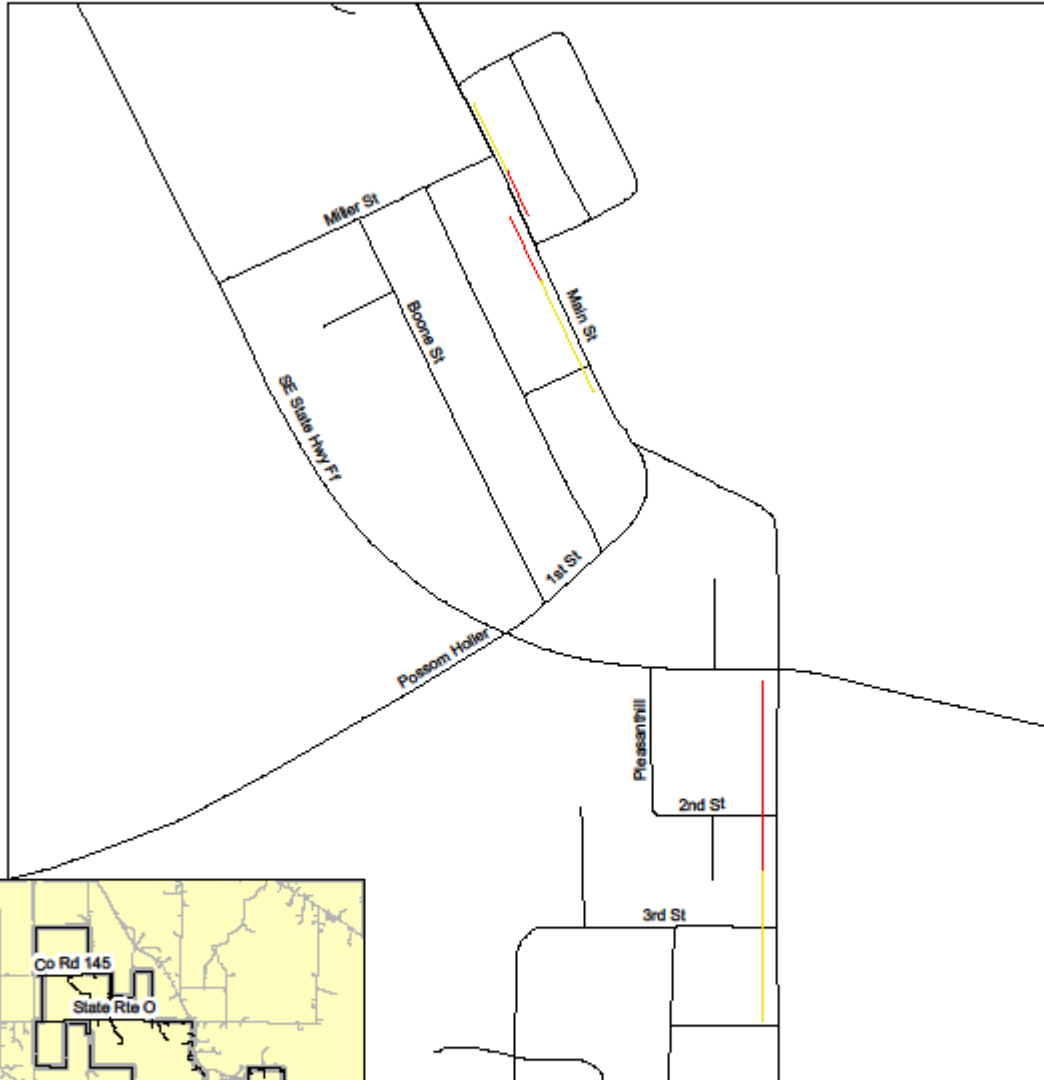


Poor Rating:

Main and Third Street



Agency, MO



Legend

- Fair - 806 Feet
- Poor - 719 Feet
- Streets



City of Cameron

Sidewalks in the City of Cameron (*Census.gov* 2019 estimated population: 9,649) were surveyed in summer/fall 2020 by Mo-Kan Regional Council. The assessment identified approximately 130,162 linear feet (24.65 miles) of sidewalk in Cameron.

Sidewalk Conditions:

The table below presents the current state of Cameron's sidewalks, based on observations made during the assessment.

Condition	Linear Feet	Percent of Total
Poor	43,775	33%
Fair	29,285	23%
Good	57,102	44%
Totals:	130,162	100%

Areas exhibiting sidewalks in good condition (**44%**) in Cameron include certain sections of downtown, the Eagles Landing neighborhood in south Cameron, areas near Cameron R-1 High School, residential neighborhoods in the northwest part of town including Lathrop Circle, Timberline Drive and Rosewood Court, and around Cameron Skate Park. Recent sidewalk improvements have been made along sections of Fifth, Eighth, and Prospect Streets, and work was underway at the writing of this report on Ensign Trace/Groat Street and Ashland Drive sidewalk additions. A new crosswalk system at the intersection of Walnut/Grand Avenue, improves pedestrian travel to the north side of town, and the addition of many ADA detectable warning signs at intersections enhances pedestrian safety.

Cameron's older neighborhoods, as well as much of Fourth, Chestnut, and Cherry Streets, are primarily served by sidewalks exhibiting either poor or fair conditions (**56%**). The commercial area near U.S. Highway 36 and Interstate-35, and the proposed business park at Missouri Highway BB and Interstate-35 are not served by sidewalks. The lack of sidewalks in these areas restricts walkability, resulting in an environment that requires individuals to drive. State routes within Cameron (excluding I-35 and U.S. 36, which are divided four-lane highways) include U.S. 69, and State Highway A. U.S. 69 (Walnut) has good sidewalk access through much of town, while the other state roads are not adequately served by sidewalks in most areas of the community.

Good Rating:

East Prospect Street with ADA
Detectable Warnings



New sidewalk intersection at Grand/Walnut



Fair Rating:

Seminary Avenue

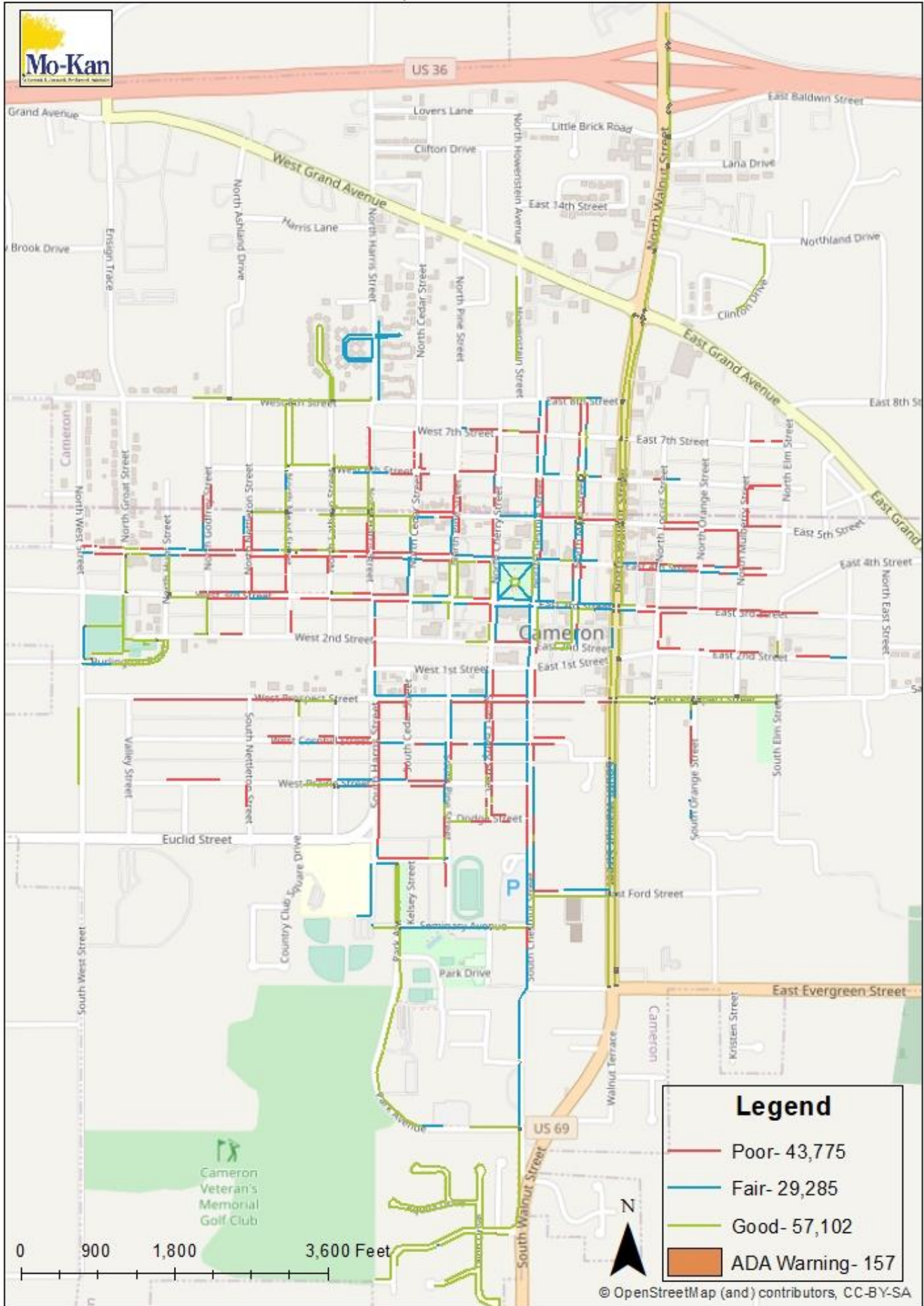


Poor Rating:

Fourth Street (between Locust & Orange)



Cameron, MO Sidewalks



City of Gower

Sidewalks in the City of Gower (*Census.gov* 2017 estimated population: 1,482) were surveyed in May 2018 2016 by Mo-Kan Regional Council. The assessment identified approximately 21,196 linear feet (approximately four miles) of sidewalk in Gower.

Sidewalk Conditions:

The table below presents the current state of Gower's sidewalks, based on observations made during the assessment.

Condition	Linear Feet	Percent of Total
Poor	8,074	38%
Fair	6,581	31%
Good	6,541	31%
Totals:	21,196	100%

Areas exhibiting good sidewalks in Gower include certain sections of downtown, a newer subdivision in northeastern Gower, areas near East Buchanan C-1 High School, and a residential neighborhood on Santa Fe Drive and Castile Street in east Gower. With the exception of a few areas, Gower's neighborhoods are primarily served by sidewalks exhibiting poor or fair conditions (69%). Much of the community is not served by sidewalks, including commercial areas along U.S. Highway 169. State Routes within Gower include U.S. 169, State Highway H and State Highway VV, all of which greatly lack adequate sidewalk infrastructure. The addition of sidewalks connecting residential neighborhoods to the school and businesses along Highway 169 would greatly improve Gower's walkability.



Good Rating:

Shivel Street and 3rd Street (southeast corner)



Fair Rating:

Hallar Street and 4th Street (southwest corner)

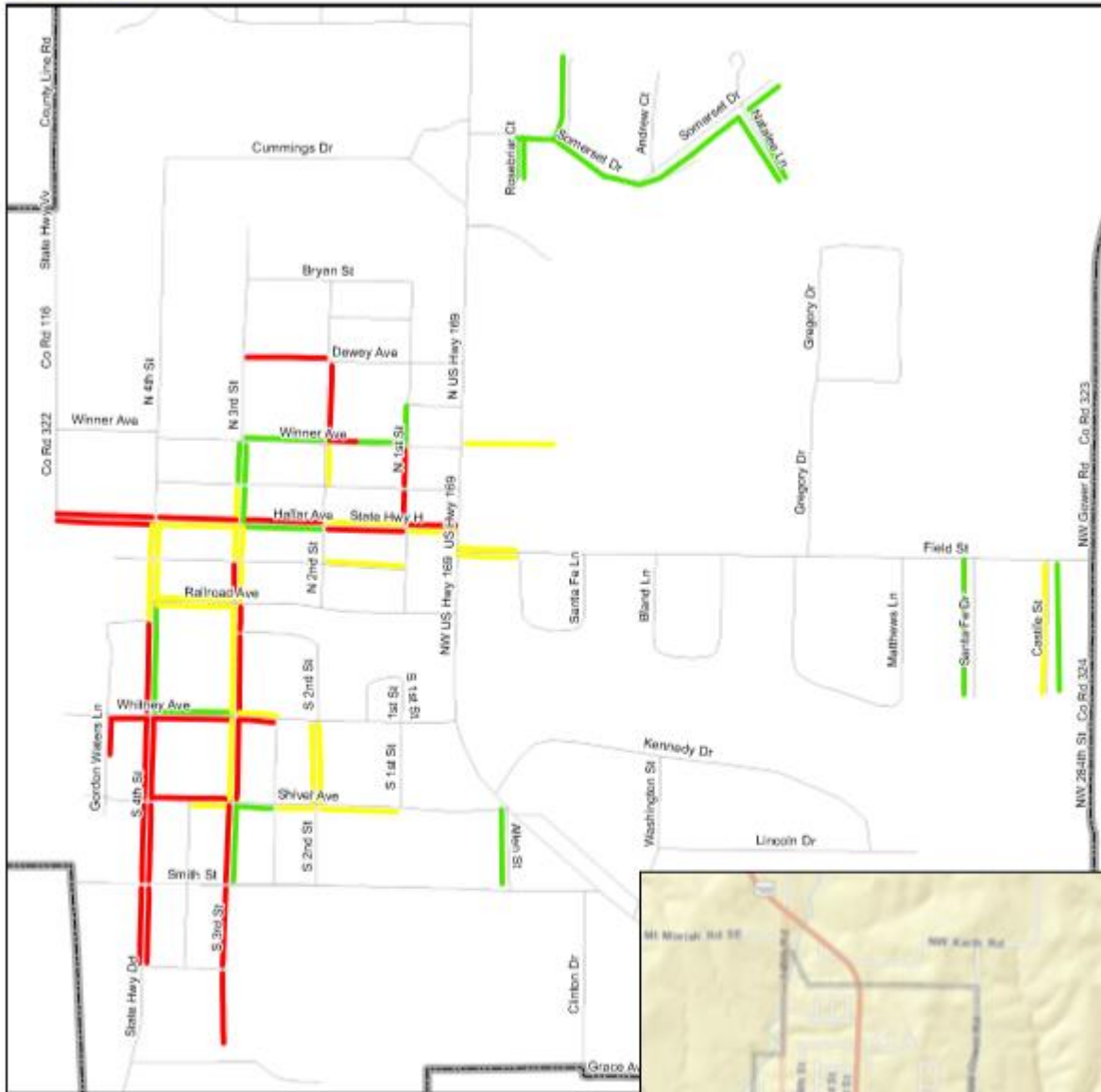


Poor Rating:

2nd Street, between Bryan Street and Dewey Street
(southeast corner)



Gower, MO



0 500 1,000 2,000 Feet

Legend

- Sidewalk Conditions**
- Red line: Poor - 8,074
 - Yellow line: Fair - 6,581
 - Green line: Good - 6,541
- City Limits** (dashed line)
- Streets** (solid line)



City of Lathrop

Sidewalks in the City of Lathrop (*Census.gov* 2017 estimated population: 2,035) were surveyed in May 2018 by Mo-Kan Regional Council. The assessment identified approximately 29,387 linear feet (approximately 5.6 miles) of sidewalk in Lathrop.

Sidewalk Conditions:

The table below presents the current state of Lathrop's sidewalks, based on observations made during the assessment.

Condition	Linear Feet	Percent of Total
Poor	16,349	56%
Fair	6,578	22%
Good	6,460	22%
Totals:	29,387	100%

Areas exhibiting good sidewalks in Lathrop include sections of downtown, the City Park, and a new residential area north of North Street (MO 116). Other areas served by sidewalks include Lathrop's elementary school, and much of Oak Street; however, most sidewalks in town (88%) are in either poor or fair condition. Additionally, MO116 separates the high school from most of the community, further restricting Lathrop's walkability. State routes in town include MO 116, MO 33, and State Highway A, all of which lack adequate sidewalks in most areas. Lathrop was awarded a Transportation Alternatives Program Grant from MoDOT in 2016 to improve approximately 2,000 feet of sidewalk on Center Street, from Oak Street to South Street, which would serve the elementary and middle schools.



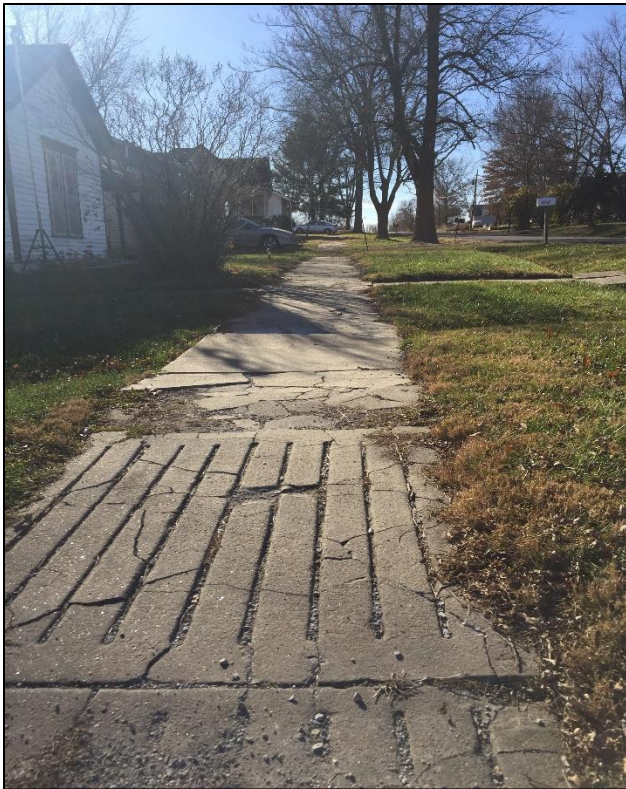
Good Rating:

Locust and Oak Street



Fair Rating:

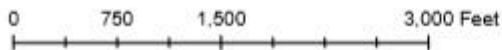
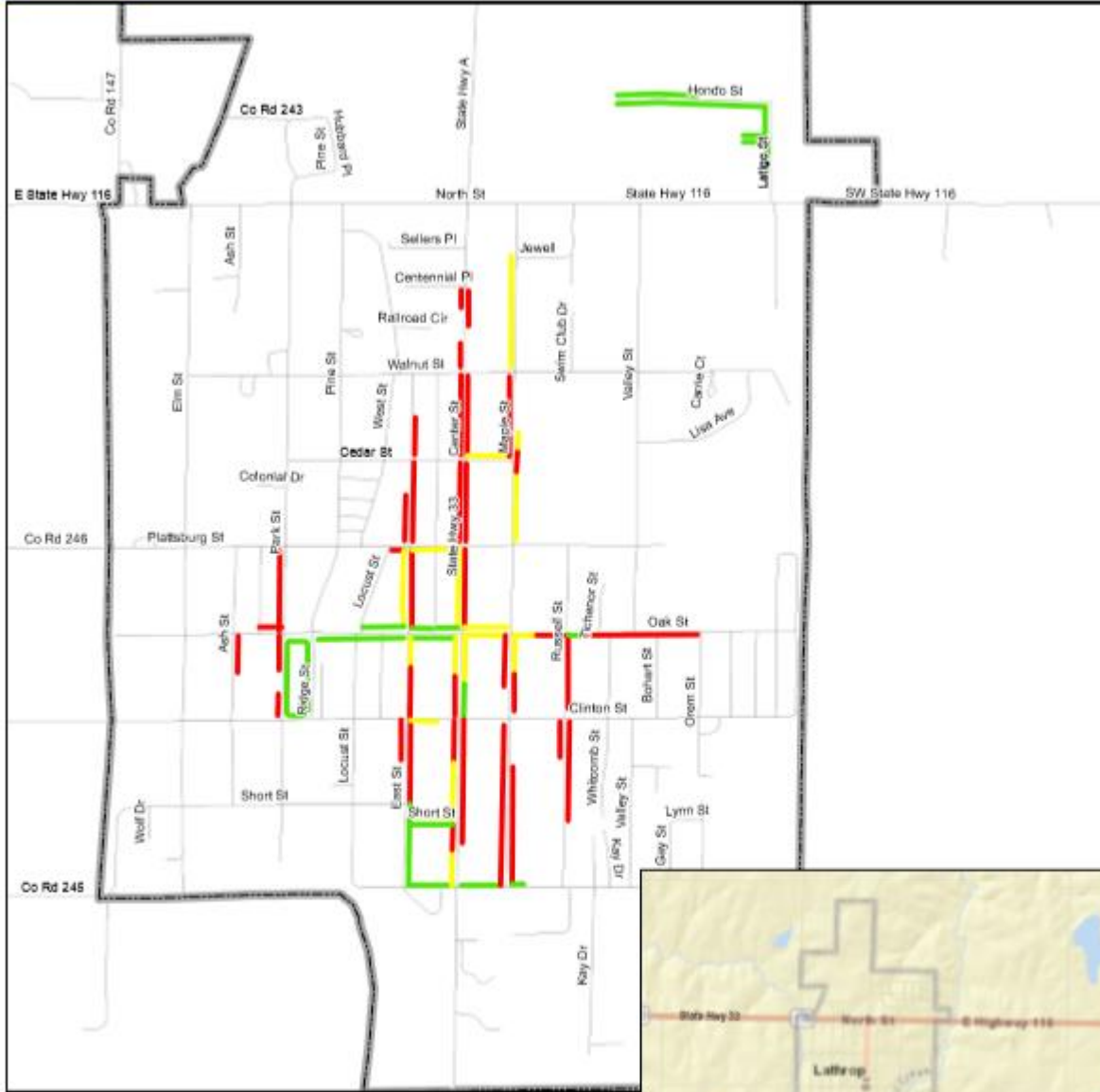
Center Street, near Oak Street



Poor Rating:

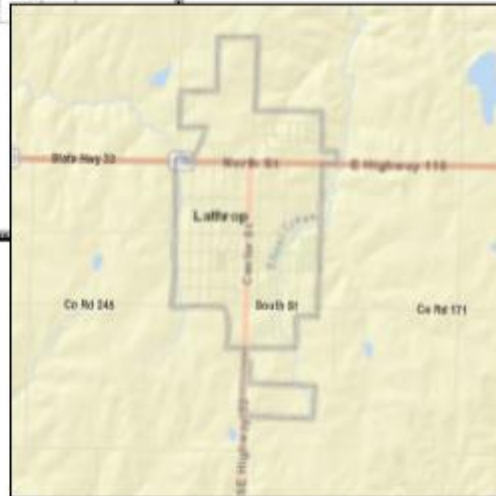
Clinton & East Street

Lathrop, MO



Legend

- Sidewalk Conditions**
- █ Poor - 16,349 Feet
 - █ Fair - 6,578 Feet
 - █ Good - 6,460 Feet
- City Limits
 Streets



City of Maysville

Sidewalks in the City of Maysville (*Census.gov* 2017 estimated population: 1,073) were surveyed in May 2018 by Mo-Kan Regional Council. The assessment identified approximately 31,152 linear feet (approximately six miles) of sidewalk in Maysville.

Sidewalk Conditions:

The table below presents the current state of Maysville's sidewalks, based on observations made during the assessment.

Condition	Linear Feet	Percent of Total
Poor	13,570	44%
Fair	7,858	25%
Good	9,724	31%
Totals:	31,152	100%

Areas exhibiting the best sidewalks in Maysville include in front of the schools on W. Main Street, sections of downtown and a few sporadic locations in residential neighborhoods. Areas surrounding the Crestview Estate Retirement Community have sidewalks that have been downgraded to fair. Most of Maysville's existing sidewalks are located in the city's older neighborhoods and along major routes. In contrast, the newest neighborhoods in western and southern areas of Maysville largely lack sidewalk infrastructure. State routes in town include MO 6 and Highway 33, which are fairly well served by sidewalks within city limits; however, the current state of those sidewalks is primarily in poor or fair condition.



Good Rating:

Sloan & Wilson Street



Fair Rating:

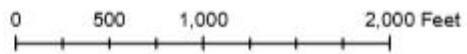
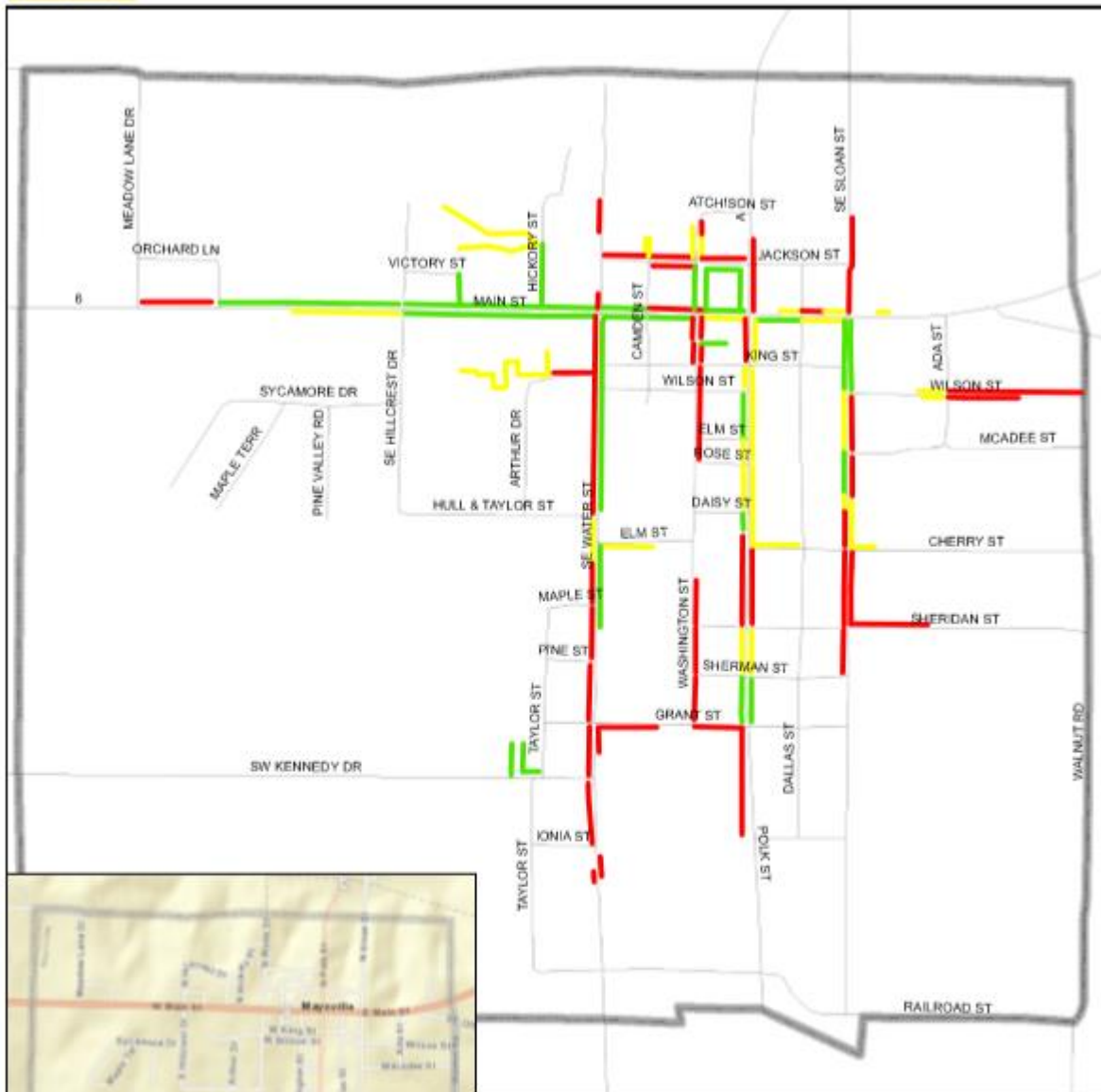
W. Elm Street, between Water
and Washington



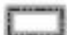

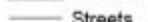


Poor Rating:

Washington and King Street

Maysville, MO



Legend

- | | |
|--|---|
| Sidewalk Conditions |  City Limits |
|  Poor - 13,570 |  Streets |
|  Fair - 7,858 | |
|  Good - 9,724 | |

City of Plattsburg

Sidewalks in the City of Plattsburg (*Census.gov* 2017 estimated population: 2,269) were surveyed in May 2018 by Mo-Kan Regional Council. The assessment identified approximately 52,066 linear feet (approximately 10 miles) of sidewalk in Plattsburg.

Sidewalk Conditions:

The table below presents the current state of Plattsburg's sidewalks, based on observations made during the assessment.

Condition	Linear Feet	Percent of Total
Poor	20,618	40%
Fair	23,686	45%
Good	7,933	15%
Totals:	52,237	100%

Areas exhibiting the best sidewalks in Plattsburg include sections of downtown, areas surrounding Plattsburg's public schools, and a few sporadic locations in residential neighborhoods. In relation to other communities within the region of comparable size, Plattsburg has many sidewalks; however, most sidewalks in town are in either poor or fair condition (85%). These sidewalks primarily exist in the city's older neighborhoods, while the newest neighborhoods are void of sidewalks. State routes in town include MO 116 and Highway C, which are fairly well served by sidewalks within city limits.



Good Rating:
W. Osage and N. 7th Street



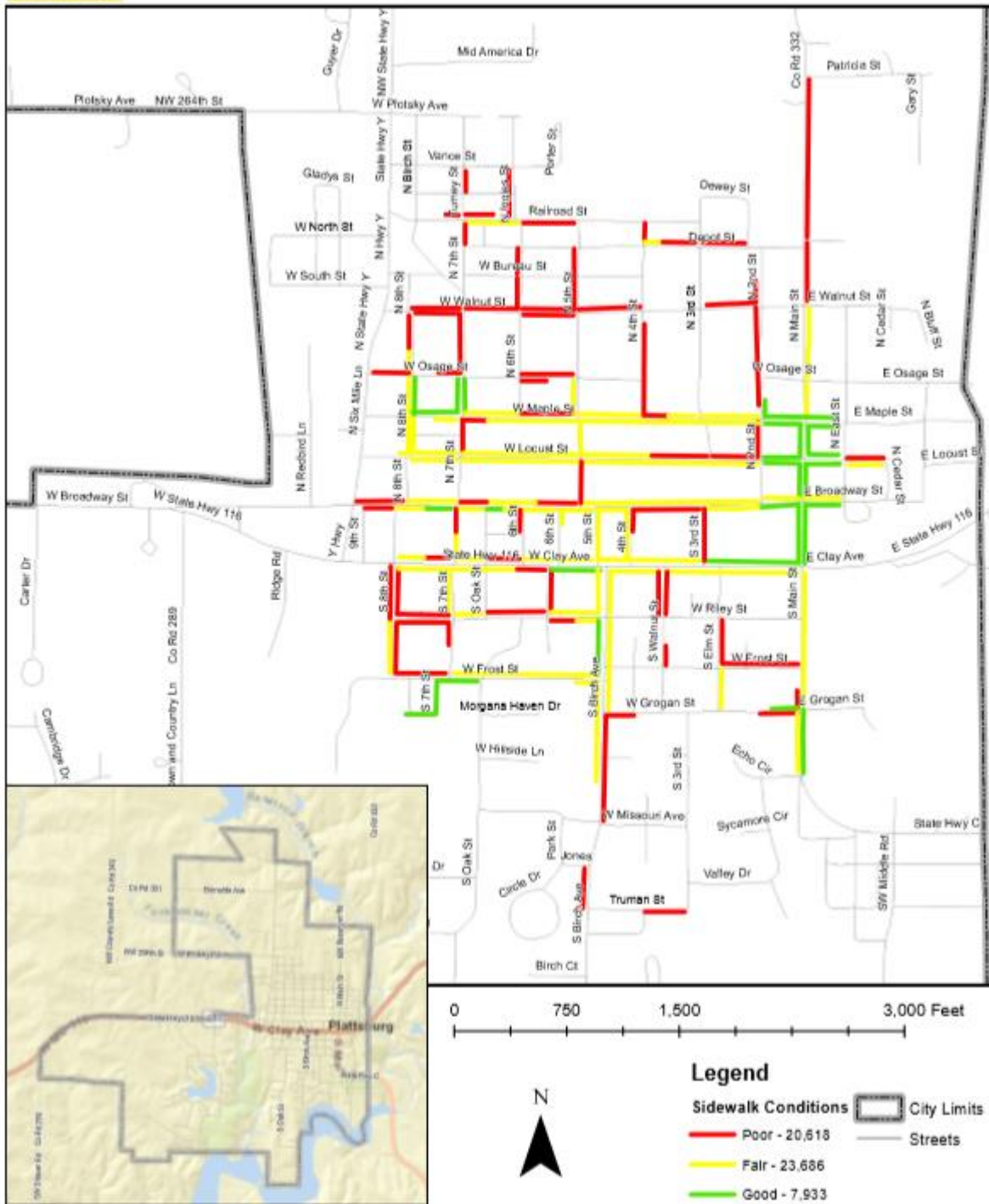
Fair Rating:
7th Street and Maple Street



Poor Rating:

Turney and Railroad Street

Plattsburg, MO



City of Stewartville

Sidewalks in the City of Stewartville (*Census.gov* 2017 estimated population: 736) were surveyed in April 2017 by employees of Mo-Kan Regional Council. The assessment identified approximately 10,637 linear feet (approximately two miles) of sidewalk in Stewartville.

Sidewalk Conditions:

The table below presents the current state of Stewartville's sidewalks, based on observations made during the assessment.

Condition	Linear Feet	Percent of Total
Poor	5,932	56%
Fair	3,554	33%
Good	1,151	11%
Totals:	10,637	100%

The best sidewalks in Stewartville are located in areas of downtown on Main Street. In relation to other communities within the region of comparable size, Stewartville has many sidewalks; however, the overall condition is mostly fair or poor (89%). These sidewalks primarily exist in the city's older residential neighborhoods. Sidewalks are not present in the newer, northern areas of town. MoDOT routes in town include State Highway K and State Highway Y, which include sidewalks with variable conditions in older areas of Stewartville. Sidewalks are not present on Y, nor on U.S. 36, which is a divided four-lane highway on the north edge of the City.



Good Rating:

6th Street and Main Street



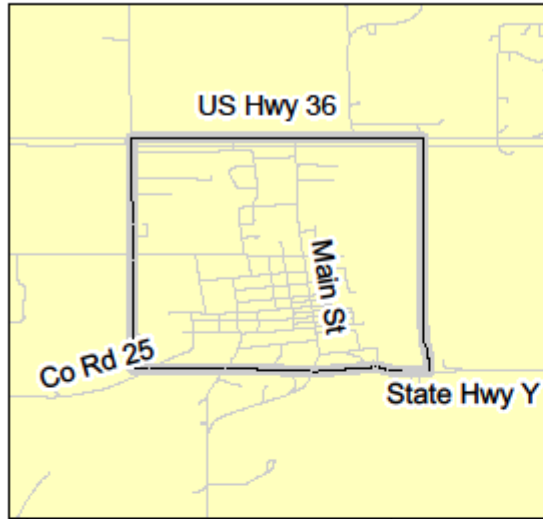
Fair Rating:
8th Street and Main Street



Poor Rating:
West Street and 6th Street

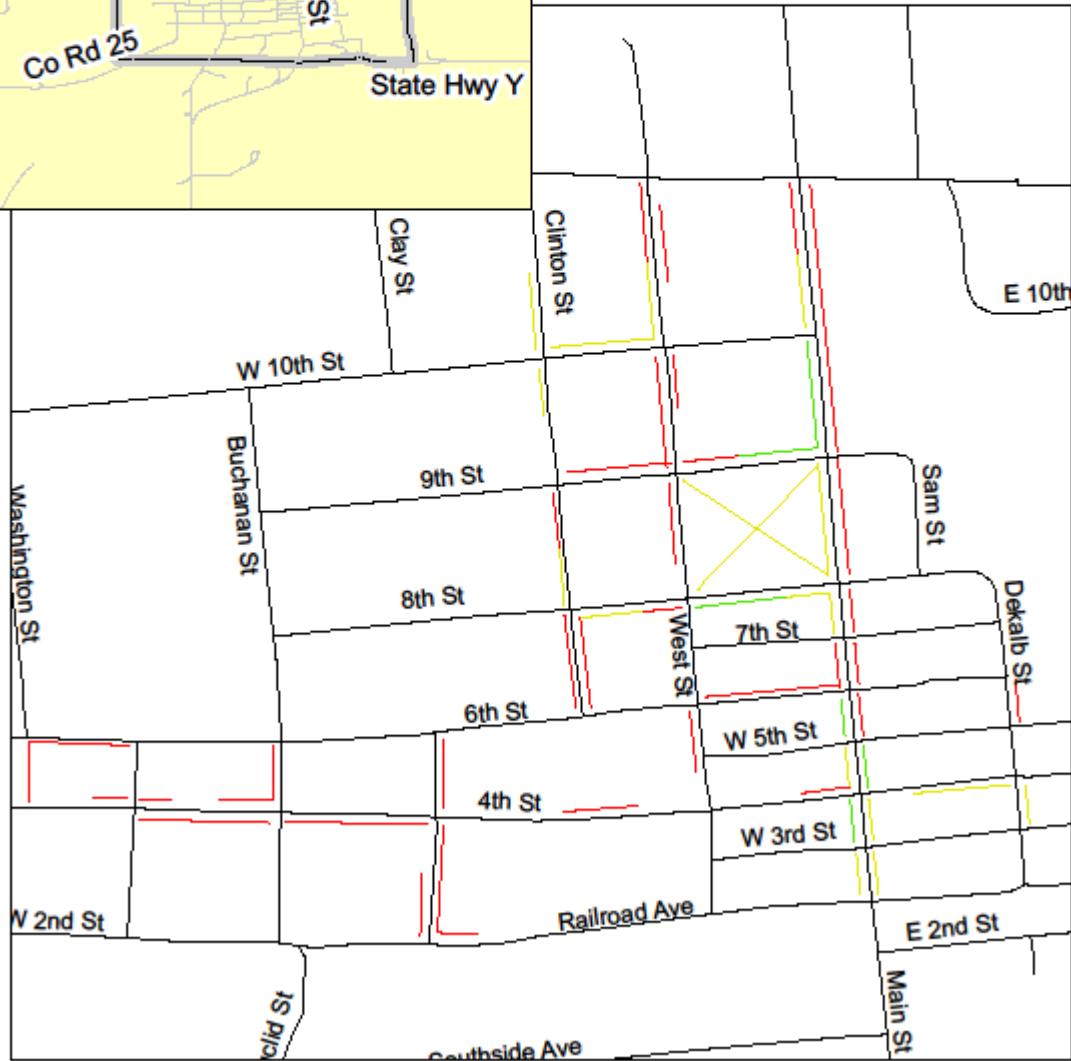
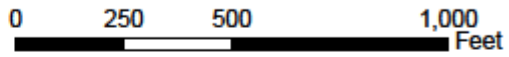


Stewartsville, MO



Legend

- Poor - 5,932 Feet
- Fair - 3,554 Feet
- Good - 1,151 Feet
- Streets
- City Limits



City of Trimble

Sidewalks in the City of Trimble (*Census.gov* 2017 estimated population: 627) were surveyed in April 2017 by employees of Mo-Kan Regional Council. The assessment identified approximately 1,578 linear feet (0.30 mile) of sidewalk in Trimble.

Sidewalk Conditions:

The table below presents the current state of Trimble's sidewalks, based on observations made during the assessment.

Condition	Linear Feet	Percent of Total
Poor	1,243	79%
Fair	335	21%
Good	0	0%
Totals:	1,578	100%

In relation to communities within the region of comparable size, Trimble is served by very few sidewalks. The majority of sidewalks that do exist are in poor condition (79%) and are located primarily along Port Arthur Road (State Highway F) in residential neighborhoods, with some adjacent to City Hall. In recent years, Trimble has come to serve as a bedroom community to Kansas City, due to its location in southern Clinton County, along U.S. Highway 169. Therefore, the community has experienced residential growth; however, public investments in sidewalk infrastructure have not accompanied this new development. This has been the case in other growing communities within the Mo-Kan region as well. State routes within Trimble include State Highway F and U.S. Highway 169. Relatively few sidewalks are located along F, with most being in poor condition. No sidewalks exist along U.S. 169, despite commercial/retail development along the highway.



Fair Rating:

Port Arthur Road and Cherry Street
(west side)

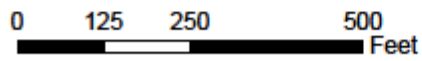
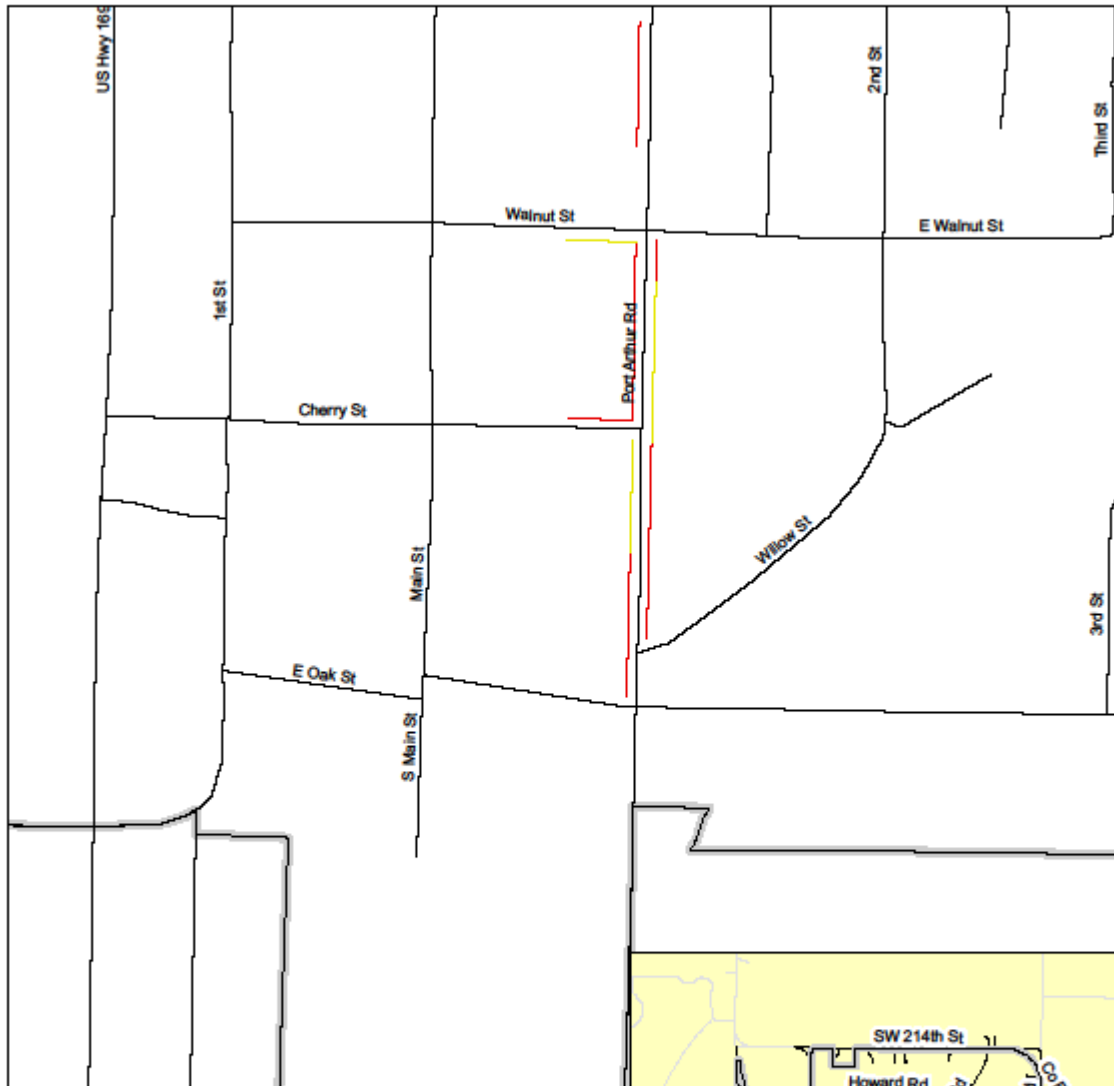


Poor Rating:

Port Arthur Road and Cherry Street
(east side)

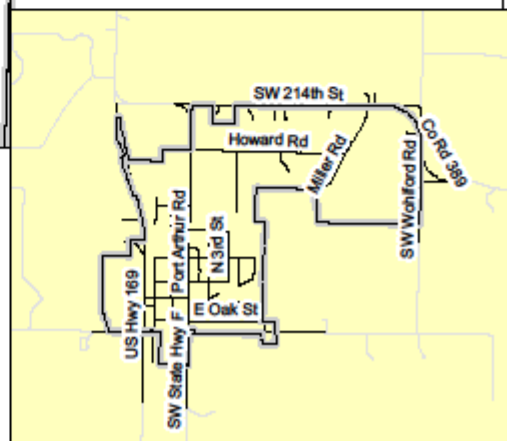


Trimble, MO



Legend

- Fair - 335 Feet
- Poor - 1,243 Feet
- Streets
- City Limits



City of Union Star

Sidewalks in the City of Union Star (2017 population: 417) were surveyed in April 2017 by employees of Mo-Kan Regional Council. The assessment identified approximately 20,458 linear feet (3.87 miles) of sidewalk in Union Star.

Sidewalk Conditions:

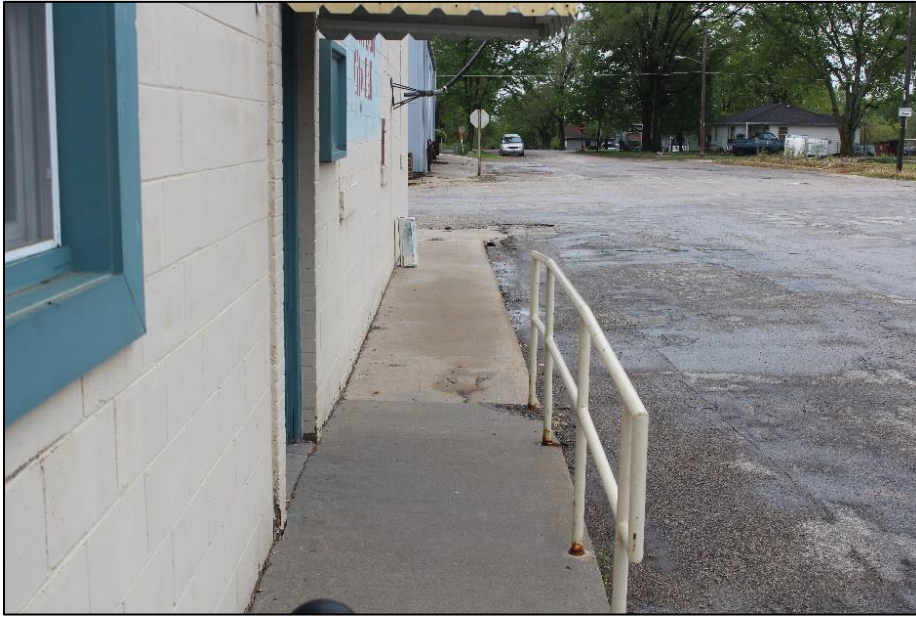
The table below presents the current state of Union Star's sidewalks, based on observations made during the assessment.

Condition	Linear Feet	Percent of Total
Poor	17,192	84%
Fair	2,720	13%
Good	546	3%
Totals:	20,458	100%

Areas exhibiting the best sidewalks in Union Star are located in a few sporadic locations in residential neighborhoods. In relation to other communities within the region of comparable size, Union Star has many sidewalks, which serve most areas of the community; however, the majority of sidewalks in town are in poor condition (84%). State routes in town include U.S. 169 and State Highway Z. Some sidewalks are located along Highway 169 inside the city limits, most of which are in poor condition. No sidewalks exist along Highway Z in town, which is where the public school is located.



Good Rating:
5th Street and Cedar Street



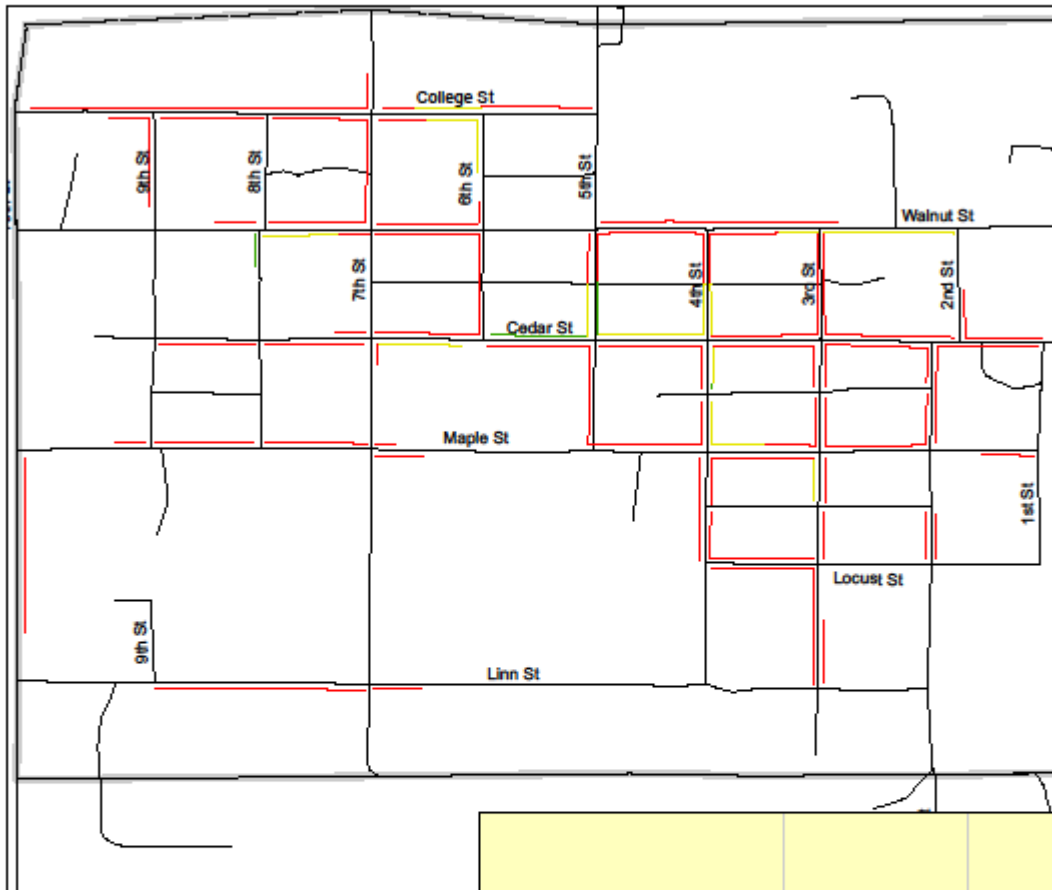
Fair Rating:
Cedar and 4th Street



Poor Rating:
6th Street and Walnut Street



Union Star, MO



Legend

- Poor - 17,192 Feet
- Fair - 2,720 Feet
- Good - 548 Feet
- Streets
- City Limits

